

# *Fred's* **Royal** **WEEDER**™

CORDLESS, LIGHTWEIGHT TILLER



Retired organic gardener and inventor  
of the Royal Weeder.

*Happy Gardening, Fred*

## USER GUIDE

*For questions or comments, please call 541-708-6606*

Fellow Gardeners,

Thank you for purchasing Fred's Royal Weeder, the lightest electric tiller on the gardening market.

A bit of background on the creation of Fred's Royal Weeder might interest you.

Once upon a time, my wife, Ilona, and I had a farm in Northern California where we grew organic asparagus. At the time, I was not a big asparagus fan, however, a neighbor up the road told us that deer do not eat asparagus. This convinced us that we could successfully grow asparagus and, after months of preparation, we planted 15 acres.

Ilona and I also cultivated a good sized vegetable garden which we would till and prepare for planting each year. However, after the garden was tilled with a large, gas rototiller, I would look at the small budding plants and think, if I had a small electric tiller, I could get in between those delicate plants and keep those rascally weeds from taking over!

I looked around to purchase a lightweight, battery powered tiller and couldn't find anything - not at garden supply stores or even Amazon. So, with the help of knowledgeable folks in the tool world, I worked on my vision for a lightweight, cordless tiller that could weed between those tender plants.

It took a year of trial and error, but persistence paid off and resulted in the tiller you've just purchased - Fred's Royal Weeder. I came up with the name for the weeder when I was in England visiting the gardens at Hampton Court Palace. I asked 'Vicky', a gardener there, if she had any weed problems and she rolled her eyes and laughed. So, when I received the first shipment of weeders, I went back to England to present Vicky with two Fred's Royal Weeders - another happy gardener.

We are proud of our small, but mighty, Fred's Royal Weeder and are confident you will enjoy using it in your garden, too.

Thank you again for your purchase, may your garden thrive and produce many bountiful crops of fresh produce and flowers!

Happy Gardening!

*Fred*

# Contents & Product Specifications

Letter from the inventor.....	2	Assembly Instructions.....	8-12
Product Specifications .....	3	Care & Maintenance.....	13
Package Contents.....	4	Charging the Battery .....	14
Parts & intended Use .....	5	Troubleshooting.....	15
Safety Information .....	6-7	Warranty .....	15

## PRODUCT SPECIFICATIONS

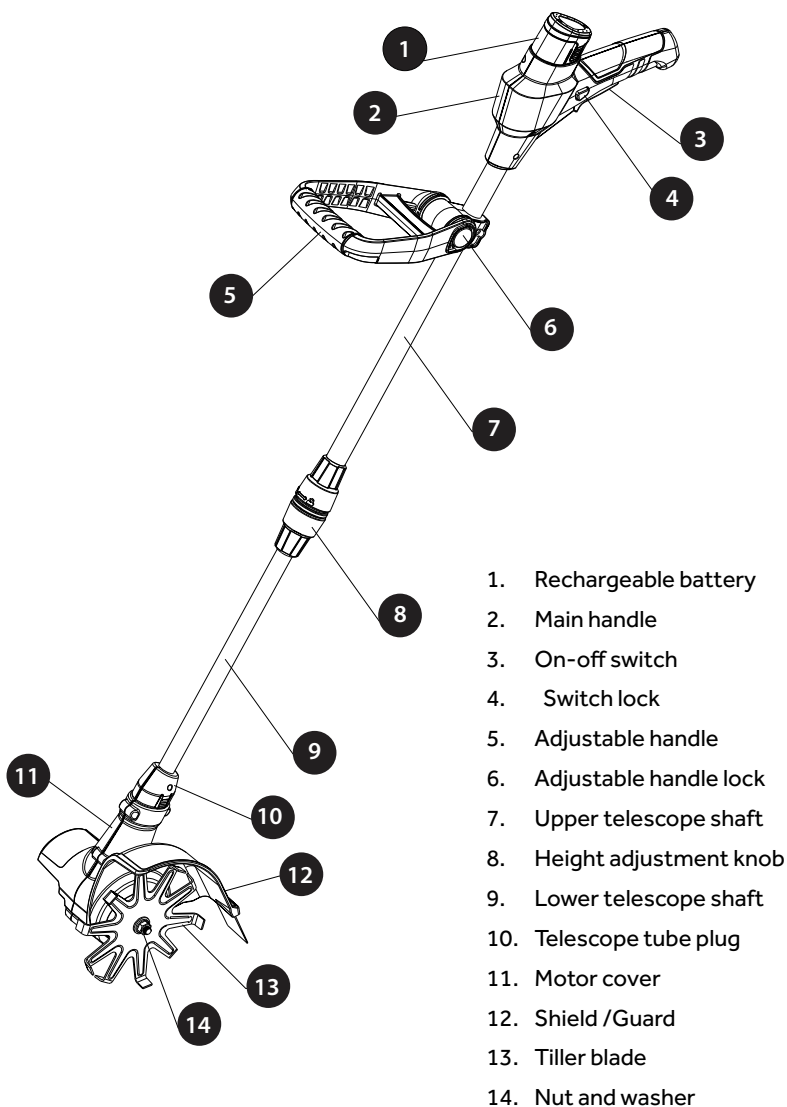
MODEL	STJ-150A/10.8
Battery voltage	10.8 V
Blade speed	200 rpm/Minimum
Blade size	6 inches / 150 mm
Net weight	3.2 Lbs
Battery type	Lithium-ion
Battery capability	2.0 Ah
Charging time	1 hour
Operating time (no load)	55 minutes (20-35 minutes with load)
Charging unit	100-240 V~/ 50-60 Hz
Charging current	2A



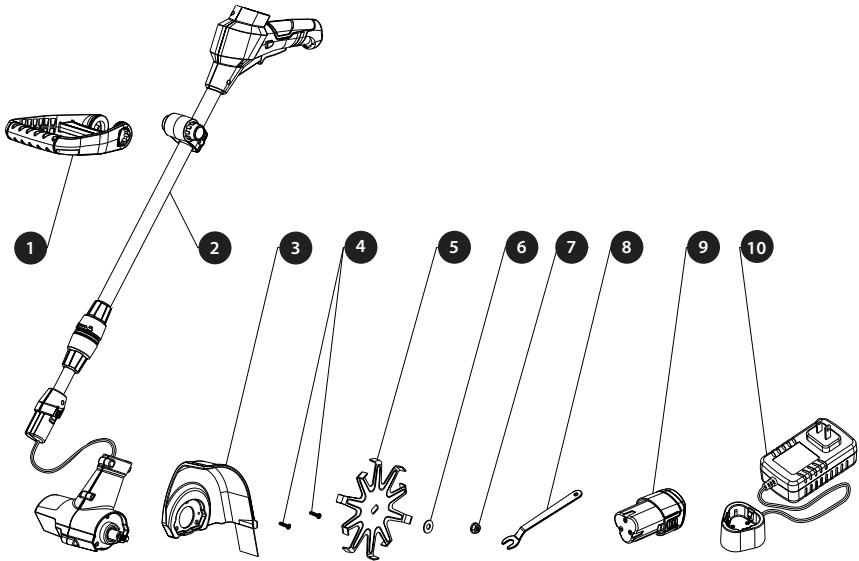
The Royal Weeder® is a trademark of  
Royal Weeder, Inc. All rights reserved

# 10.8 V cordless WEEDER/TILLER

MODEL STJ-150A/10.8



## Parts and Intended Use



- 1 Adjustable Auxiliary Handle
- 2 Unit with Motor
- 3 Plastic shield /guard
- 4 2-ST3.5x13 screws
- 5 Tiller blade

- 6 Washer
- 7 M8 nut
- 8 Wrench
- 9 Rechargeable battery
- 10 Battery charger/ charger pedestal

### INTENDED USE

- The Royal Weeder® is designed for weeding, loosening soil in garden and blending additives.
- The weeder may be used only for the tasks it is designed to handle. Any other use is deemed to be a case of misuse. The user/operator and not the manufacturer will be liable for any damage or injuries of any kind resulting from such misuse.
- Please note that The Royal Weeder® has not been designed for use in commercial, trade or industrial applications. Our warranty will be voided if the appliance is used in commercial, trade or industrial businesses or for equivalent purposes.

# Safety Information

## SYMBOLS



Warning of risk of personal injury or damage to the weeder



Read this instruction manual



Always wear safety goggles while using the weeder



Wear boots and gloves when using the weeder



Risk of electrical shock



## IMPORTANT INFORMATION AND WARNINGS

- When using The Royal Weeder® always observe all safety instructions.
- For your own safety **please read the entire manual carefully before using the weeder.**
- Keep this user manual for reference.
- If you transfer ownership of the machine, please provide the instruction and safety manual to receiver as well.
- We can't accept any responsibility for damage or accident due to failure to comply with these instructions and safety information.
- Non-compliance with safety rules and instructions may cause damage to the motor, or serious injury.
- Clean and store the machine in a secure dry place for later use.
- This appliance is not intended for use by persons (including children) with reduced physical, sensory or mental capabilities, or lack of experience and knowledge.

## UNPACKING

- Open the packaging and remove the weeder and parts with care.
- Check to see if all items are supplied.
- Inspect the weeder and accessories for transport damage.
- If possible, please keep the packaging until the end of the Warranty period.
- Do not let children play with plastic bags, foils or small parts. There is a danger of swallowing or suffocating!

# Safety Information



## SAFETY FOR HANDS AND FEET

- Always operate the weeder using both hands.
- Wear gloves and boots when using this tool.



## SAFETY FOR EYES

- **Always wear safety glasses** when operating the weeder.
- The operation of any power tool can result in foreign objects being thrown into your eyes which can result in severe eye damage. Before beginning tool operation, **always wear safety goggles or safety glasses with side shields**. Always use eye protection which is marked to comply with ANSI Z87.1.



## ELECTRICAL SAFETY

- **Do not expose power tools to rain or wet conditions.** Water entering a power tool will increase the risk of electric shock.



## WORK AREA SAFETY

- Do not operate power tools in explosive atmospheres, such as in the presence of flammable liquids, gases or dust. Power tools create sparks which may ignite the dust or fumes.
- Keep children and bystanders away while operating a power tool. Distractions can cause you to lose control.



## PERSONAL SAFETY

- **Stay alert**, watch what you are doing and use common sense when operating a power tool. Do not use a power tool while you are tired or under the influence of drugs, alcohol or medication. A moment of inattention while operating power tools may result in serious personal injury.
- **Use personal protective appliance.** Always wear eye protection. Protective appliance such as dust mask, non-skid safety shoes, hard hat, or hearing protection used for appropriate conditions will reduce personal injuries.
- **Prevent unintentional starting.** Ensure the switch is in the off-position before connecting to power source and/or battery pack, picking up or carrying the tool.
- **Do not carry power tools with your finger on the power switch.**
- **Remove any adjusting key or wrench before turning the power tool on.** A wrench or a key left attached to a rotating part of the power tool may result in personal injury.
- **Keep proper footing and balance at all times and do not overreach.** This enables better control of the power tool in unexpected situations.
- **Dress properly—do not wear loose clothing or jewelry.** Keep your hair, clothing and gloves away from moving parts. Loose clothes, jewelry or long hair can be caught in moving parts.

# Safety Information



## POWER TOOL USE AND CARE

- **Do not force the power tool.** Use the correct power tool for your application. The correct power tool will do the job better and safer at the rate for which it was designed.
- **Do not use the power tool if the switch does not turn it on and off.** Any power tool that cannot be controlled with the switch is dangerous and must be repaired.
- **Store idle power tools out of the reach of children** and do not allow persons unfamiliar with the power tool or these instructions to operate the power tool. Power tools are dangerous in the hands of untrained users.
- **Maintain power tools.** Check for misalignment or binding of moving parts, breakage of parts and any other condition that may affect the power tool's operation. If damaged, have the power tool repaired before use. Many accidents are caused by poorly maintained power tools.
- **Use the power tool, accessories and tool bits, etc. in accordance with these instructions,** taking into account the working conditions and the work to be performed. Use of the power tool for operations different from those intended could result in a hazardous situation.



## BATTERY TOOL USE AND CARE

- **Recharge only with the charger specified by the manufacturer.** A charger that is suitable for one type of battery pack may create a risk of fire when used with another battery pack.
- **Use power tools only with specifically designated battery packs.** Use of any other battery packs may create a risk of injury and fire.
- **When battery pack is not in use, keep it away from other metal objects** like paper clips, coins, keys, nails, screws or other small metal objects that can make a connection from one terminal to another. Shorting the battery terminals together may cause burns or a fire.
- **Under abusive conditions liquid may be ejected from the battery; avoid contact.** If contact accidentally occurs, flush with water. If liquid contacts eyes, additionally seek medical help. Liquid ejected from the battery may cause irritation or burns.
- **Do not crush, drop or damage the battery.** Do not use a battery or charger that has been dropped or received a sharp blow. A damaged battery is subject to leakage or explosion.



## ADDITIONAL SAFETY INSTRUCTIONS FOR DISPOSAL

- The battery must be removed from the weeder before it is disposed of safely.



# Assembly Instructions



## IMPORTANT - READ INSTRUCTIONS BEFORE ASSEMBLING

- **Read this instruction manual and carefully follow instructions** for assembling or adjusting the weeder.
- **Remove the battery while assembling the weeder.**
- **Read and understand the battery charging instructions on page 13.**
- **Wear gloves to protect your hands.**

### 1. CONNECT THE HANDLE TO THE MOTOR:

- To connect the main handle and shaft to the motor part (fig.1-a) and (fig.1-b):  
Coil the lead cord into the opening on top of the motor, then insert the main handle and shaft into the opening. The shaft will click into place. (fig.1-b).

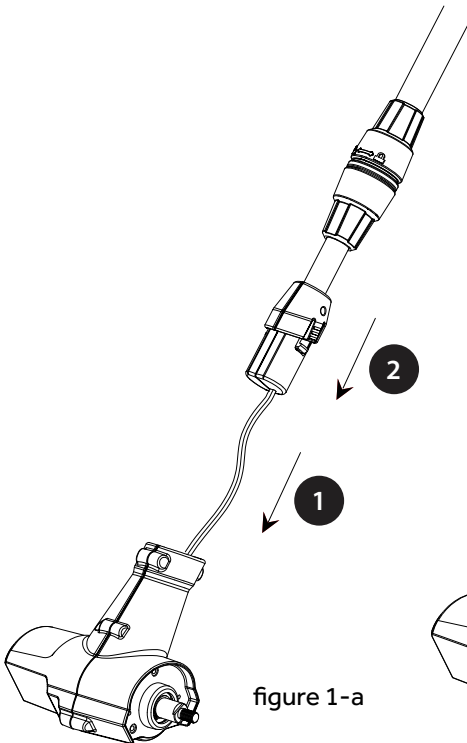


figure 1-a

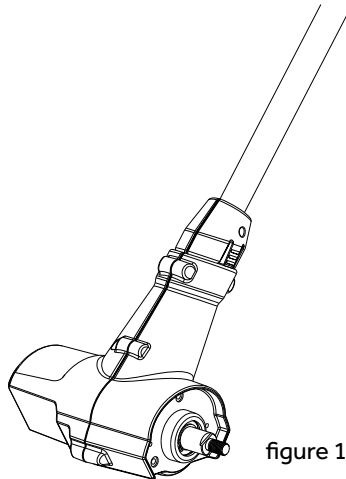


figure 1-b

Note: See our YouTube channel if you need help connecting the handle to the motor:  
<https://www.youtube.com/channel/UCIhRIoJQyPfRfc5MdNYCmjQ/videos>

# Assembly Instructions

## 2. MOUNT THE SHIELD/GUARD

- Mount the clear plastic guard to the weeder (fig.2-a).
- Fasten the guard with two ST3.5\*13 screws using a phillips screwdriver (fig.2-b).

**Note: Put a small amount of oil on the screws before screwing in.**

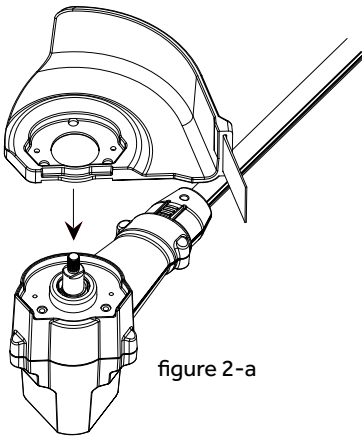


figure 2-a

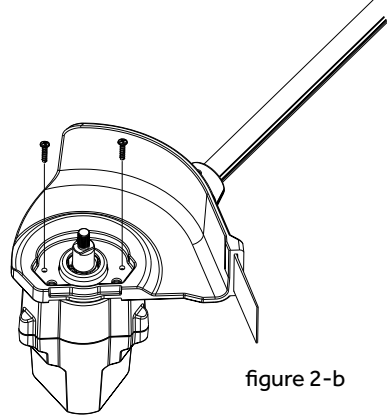


figure 2-b

## 3. MOUNT THE BLADE

- Remove the nut and washer from the motor shaft. Mount the tiller blade on the motor shaft (fig. 3a), then tighten the M8 nut on washer with wrench supplied (fig.3-b).

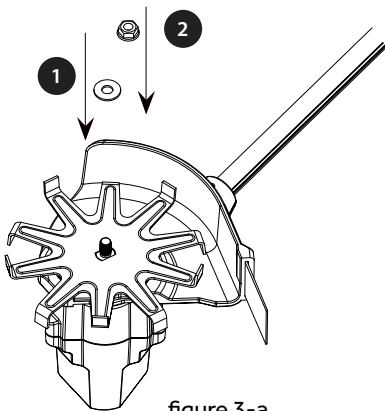


figure 3-a

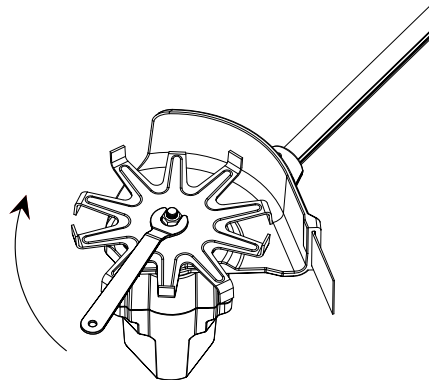


figure 3-b



**WARNING:** Always remove the battery before inserting or removing the tiller blade.

# Assembly Instructions

## 4. MOUNT THE ADJUSTABLE HANDLE

Press the lock button on aluminum shaft (1) on opposing sides, and at the same time insert the handle (2) fitting one side first, then allowing the other side of the handle to snap into place.(fig.4-a)

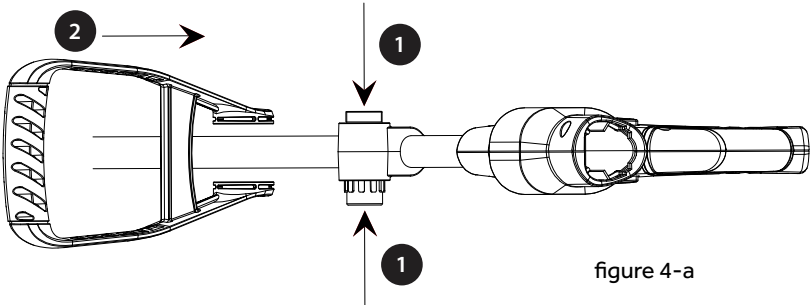


figure 4-a

When handle is in position, the lock button will lock the handle in place automatically. (fig.4-b)

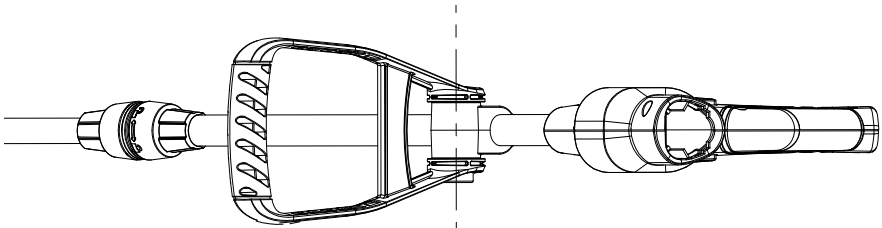


figure 4-b

Press and hold the lock button (1), then adjust the handle. When it is in desired position (2), release the lock button. (fig.4-c)

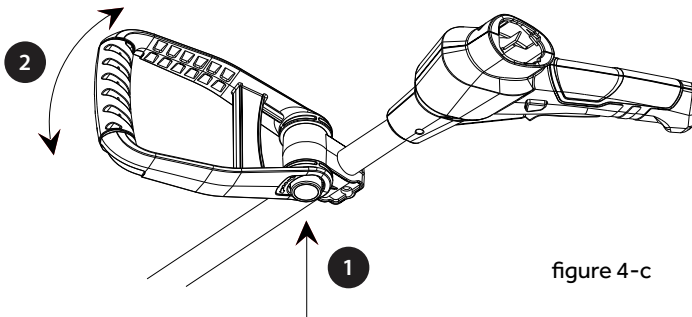
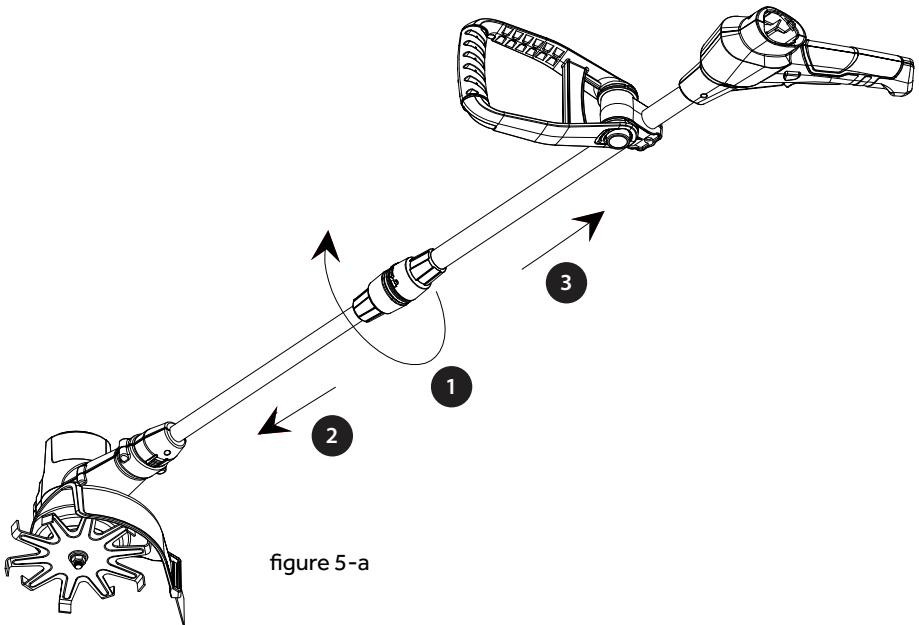


figure 4-c

# Assembly Instructions

## 5. ADJUST THE LENGTH OF THE WEEDER (fig.5-a)

- Loosen the lower half of the knob located in the middle of aluminum shaft by turning it clockwise.
- Pull the lower shaft up or down to adjust to desired height.
- Tighten the knob by turning counter clockwise.



**WARNING :** It is important to adjust the weeder to a comfortable height before starting the motor.

## Care and Maintenance



### **WARNING**

**Remove the battery before performing maintenance to the weeder**

- Keep the weeder battery and handle away from dirt and water.
- Clean after use with a wet cloth.
- Do not use harsh detergents or other solvents on plastic parts.
- Only external parts need to be cleaned after use.
- Recharge the battery for next use.

### **STORAGE:**

- Do not store in sunlight, in an excessively warm place, or near a furnace.  
The battery life will be shortened.

# Charging the Battery

## 6. CHARGING THE BATTERY

- The charger includes two parts: the adapter (a) and the charger pedestal (c).
- Do NOT use any other type of charger. This charger is only for use for this type of battery.
- Please observe the specified voltage, the voltage must be the same as that marked on the rating plate of the battery charger:100-240 V50-60 Hz



**The battery must be fully charged before your first usage.** Insert the battery in the charging pedestal and allow the battery to charge for a full five hours before you use it for the first time. DO NOT ALLOW WATER TO COME IN CONTACT WITH THE CHARGING UNIT.

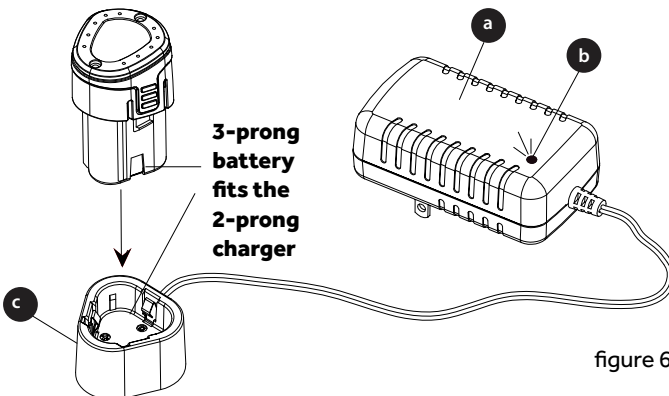
**Note:** If the weeder doesn't work when pressure is applied to the trigger, this means the battery is not charged - return it to the charging pedestal and continue charging.

### HOW TO CHARGE THE BATTERY (fig. 6-a)

1. Check that your voltage is the same as that marked on the rating plate of the battery charger. Insert the power plug of the adapter (a) into an electrical wall socket. The LED (b) on the adapter will turn green.
2. Insert the battery pack into the charger pedestal (c) .The LED will turn red at once indicating that the charger is working.
3. When fully charged, the LED will turn green.
4. Remove the battery from the charging pedestal when it is fully charged.

### ATTENTION:

Please remove the battery from the charger pedestal after it is fully charged. Do not store the battery in the charging pedestal.



# Troubleshooting & Warranties

If you still have questions or an unresolved issue after going through this troubleshooting guide, or if you'd like to speak to our customer service, please email: [fred@royalweeder.com](mailto:fred@royalweeder.com) or call 541-708-6606.

Problem	Possible Cause	Corrective Action
Weeder runs at a sluggish speed	Battery is not fully charged	Remove battery and place in charging pedestal. Charge for 30 minutes.
Motor fails to start when switch trigger is depressed	Battery is not secure  Battery is not charged	To secure the battery, make sure the latches on the battery compartment snap into place. Charge the battery according to the instructions included in this guide.
Motor runs but tiller does not move	The weeder is damaged	Do not use The Royal Weeder®. Email to: <a href="mailto:info@royalweeder.com">info@royalweeder.com</a>
Weeder smokes during operation	The weeder is damaged	Do not use The Royal Weeder®. Email to: <a href="mailto:fred@royalweeder.com">fred@royalweeder.com</a>

For questions or comments, please call 541-708-6606.

## 30-DAY MONEY-BACK GUARANTEE

You may return The Royal Weeder® for any reason, for a full refund within 30 days of date of purchase. Email [fred@royalweeder.com](mailto:fred@royalweeder.com) to notify us of your intention to return. Package and ship the product along with receipt or proof of purchase to: Royal Weeder, Inc., 415 Williamson Way #7, Ashland, OR 97520

## 2-YEAR HASSLE-FREE WARRANTY

- This Royal Weeder® is warranted to the original purchaser from the original purchase date for two (2) years subject to the warranty coverage described herein.
- The Royal Weeder® is warranted for the original user to be free from defects in material and workmanship.
- If you believe The Royal Weeder® is defective at any time during the specified warranty period, simply return the weeder along with proof of purchase to the place of purchase for a free replacement or refund, or email [fred@royalweeder.com](mailto:fred@royalweeder.com) for warranty service.

**This warranty is void** if defects in materials or workmanship or damages result from repairs or alterations which have been made or attempted by others or the unauthorized use of nonconforming parts; the damage is due to normal wear, damage is due to abuse (including overloading of the tool beyond capacity), improper maintenance, neglect or accident; or the damage is due to the use of the tool after partial failure or use with improper accessories or unauthorized repair or alteration.

Purchase date \_\_\_\_\_

Purchased from \_\_\_\_\_

Attach receipt here



**Questions, problems, missing parts?**  
**Email our Customer Service Department at:**  
**541-708-6606**  
**or email**  
**[fred@royalweeder.com](mailto:fred@royalweeder.com)**

The Royal Weeder®  
Royal Weeder, Inc.  
415 Williamson Way #7  
Ashland, OR 97520 USA  
[www.royalweeder.com](http://www.royalweeder.com)